

INSTALL NOTES

A special thank for CAPON who has created the batch file of the install Process

1) SVF AND THE OFFICIAL VERSION of AACW

SVF doesn't modify any normal game file. It just install itself in a new folder and places in the Ageod American Civil War folder a file named modpath.ini which forces AACW to load the game.

If you remove this file from the folder, you will revert to normal version. As simple as that. I place mine in the doc subfolder when I need to switch to the normal version.

SVF being thenfully independant of the official to the exception of the AACW.exe file, you can revert back from a beta version to the official one and let SVF untouched and play it (It suffices to move the SVF folder and the modpath.ini before deleting AACW and replace it in the AACW after the new install). No need to reinstall SVF.

Uncompatibilities: as SVF doesn't modify anything, there's none I can remember when switching for the normal version.

On the contrary, having placed another mod in the normal folder will create troubles in SVF gameplay (and only it it)if you install SVF from this modified version, as SVF folder copies to it all the normal file I let unmodded. So files modified by other mods would be copied in SVF folder and create bugs in SVF. Any graphical mod however may be applied to the official game without damage for SVF. Gfx will just appear or not, that's all.

The pain is then just to manually switch the modpath.ini file. If I had more programming skill, I would create a batch file. I can't for now.

So there is the solution consisting to create 2 folders. BUT that implies to apply the official patches to both folders as some contents of the official patches aren't integrated in SVF install files because the SVF install process will create them in the SVF folder.

So in the end, keeping SVF in the same folder is certainly better to avoid any troubles when playing SVF.

2) I suggest to delete first your Struggle for a vast future folder before installing the mod.

3) If you installed AACW with a different path than the default one

Beware: the default path for the self extracting files (SVF0, SVF1 ,SVF2 and SVF3) is beginning by C:\Program Files\AGEod's American Civil War\Struggle for a vast future mod. If your AACW install is located with a different path, you have to enter these following paths manually to get a complete install:

For SVF1: your harddisk letter :\name of your Program Files folder\AGEod's American Civil War\Struggle

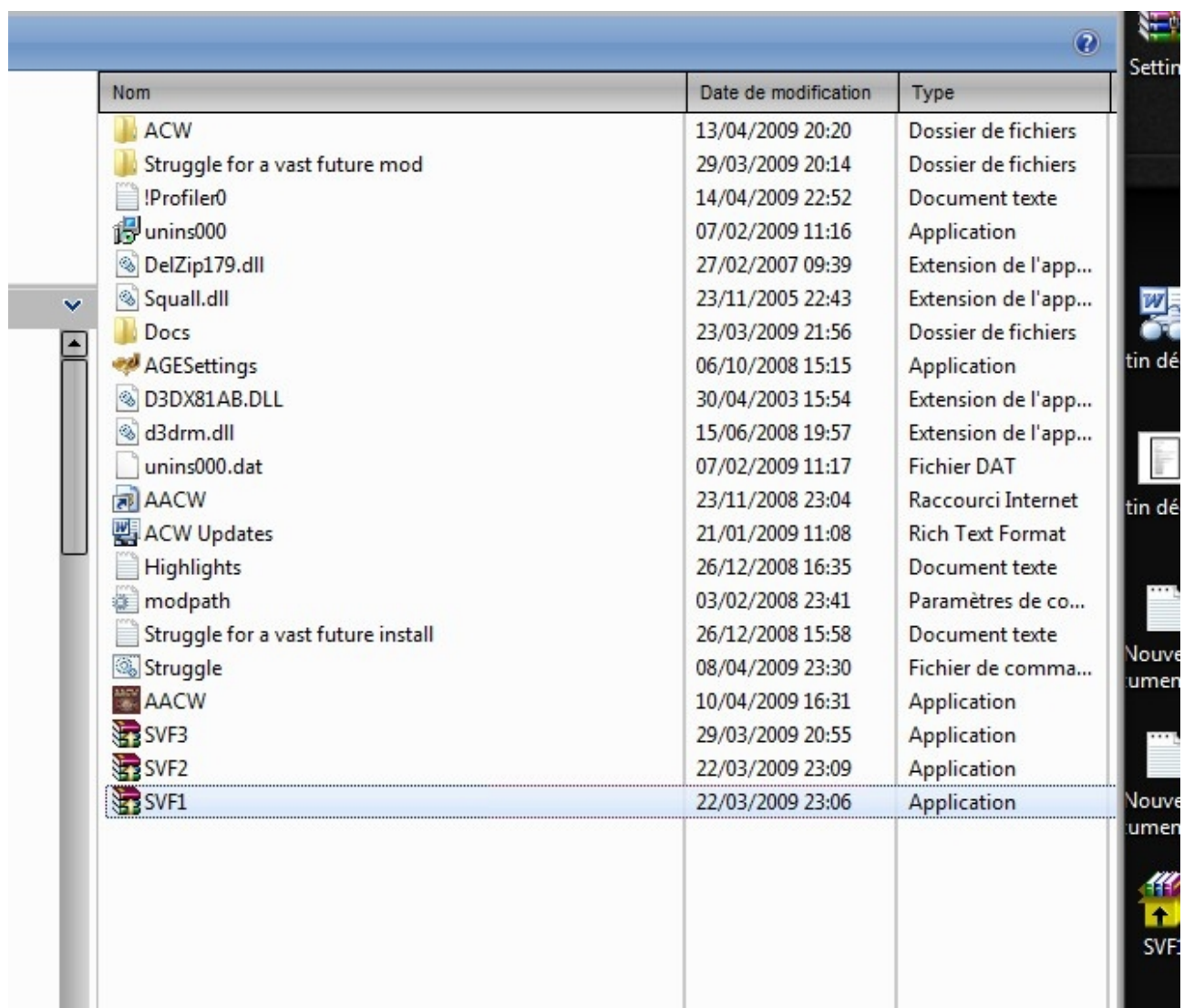
For SVF2: your harddisk letter :\name of your Program Files folder\AGEod's American Civil War\Struggle\GameData

For SVF3: your harddisk letter :\name of your Program Files folder\AGEod's American Civil War\Struggle\Graphics

4) SVF Install process

To use the files, do the following:

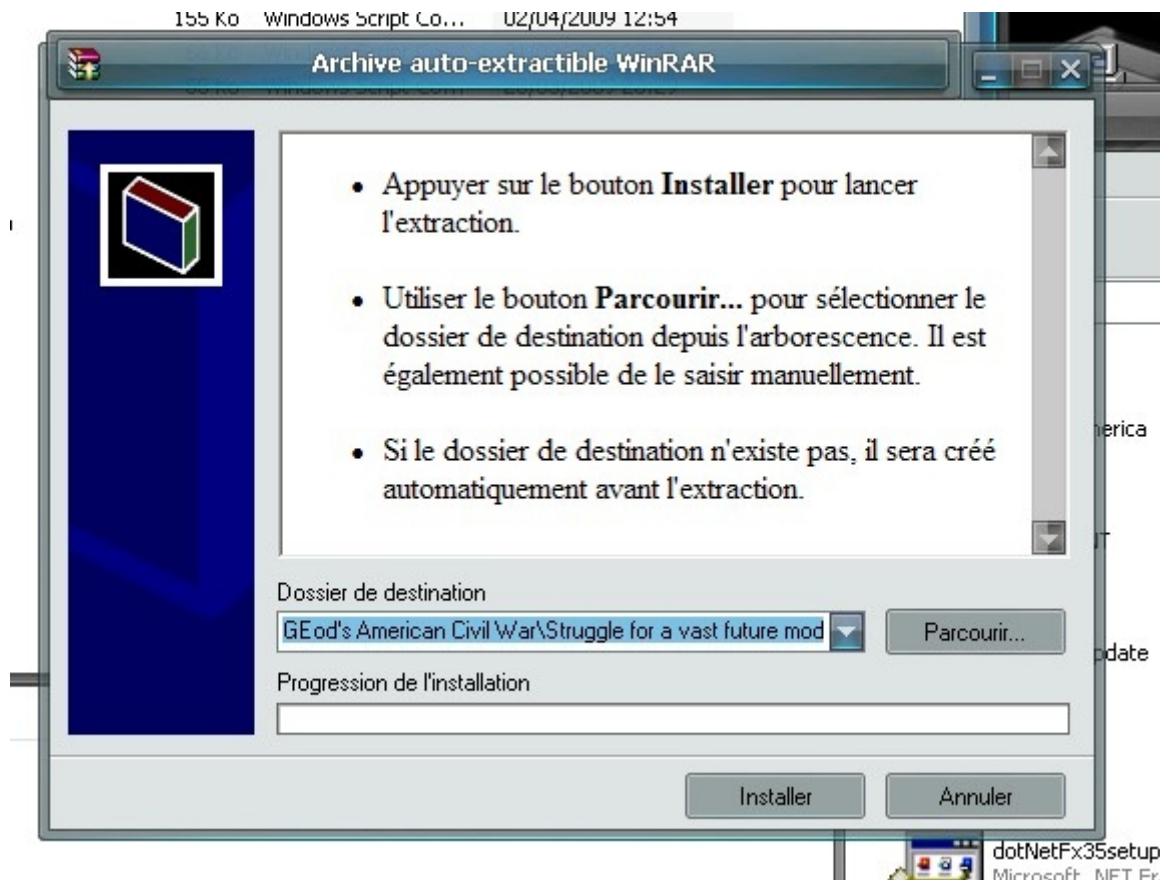
A) Unzip the four zip files to the "AGEod's American Civil War" folder and not the ACW subfolder of the AACW one). The "AGEod's American Civil War" should look like this:



Nom	Date de modification	Type
ACW	13/04/2009 20:20	Dossier de fichiers
Struggle for a vast future mod	29/03/2009 20:14	Dossier de fichiers
!Profiler0	14/04/2009 22:52	Document texte
unins000	07/02/2009 11:16	Application
DelZip179.dll	27/02/2007 09:39	Extension de l'app...
Squall.dll	23/11/2005 22:43	Extension de l'app...
Docs	23/03/2009 21:56	Dossier de fichiers
AGESettings	06/10/2008 15:15	Application
D3DX81AB.DLL	30/04/2003 15:54	Extension de l'app...
d3drm.dll	15/06/2008 19:57	Extension de l'app...
unins000.dat	07/02/2009 11:17	Fichier DAT
AACW	23/11/2008 23:04	Raccourci Internet
ACW Updates	21/01/2009 11:08	Rich Text Format
Highlights	26/12/2008 16:35	Document texte
modpath	03/02/2008 23:41	Paramètres de co...
Struggle for a vast future install	26/12/2008 15:58	Document texte
Struggle	08/04/2009 23:30	Fichier de comma...
AACW	10/04/2009 16:31	Application
SVF3	29/03/2009 20:55	Application
SVF2	22/03/2009 23:09	Application
SVF1	22/03/2009 23:06	Application

B). Double-click Struggle.bat into the "Ageod's Civil war folder"

C) During the install process, 3 dialog boxes like this should appear. Click on the left button (Installer)



D). Launch AACW and enjoy the mod!!! or grumble...

5) TO REVERT TO NORMAL PLAY

just move the modpath.ini out from the AGEod's American Civil War folder. And replace it to play again the mod

6) In case of troubles

If something goes wrong open the log folder in the Struggle for a vast future mod folder and send me the !Main log.txt to ozark@wanadoo.fr.

